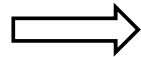


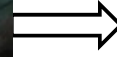
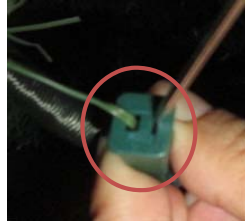
Micro Dot Lights Synchronization Issue color fixing step

PLEASE ALWAYS UNPLUG YOUR TREE FIRST BEFORE DO THE FOLLOWING STEPS

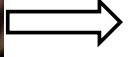
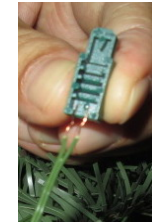
1. Locate the connector of string with possible bad connection on branch near the pole



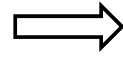
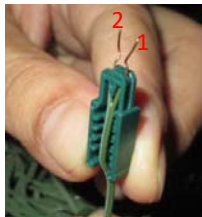
2. Insert the screw driver into empty space, push in, then dig the connector out



3. After pulling out the connector, please also pull the wire out, even the wire, remember wire 1 and wire 2



4. Flip wire 1 and wire 2, then re-insert the wire back onto the connector, then place the connector back into where you pull it out



5. Push in so to make sure the connector is fully connected.

